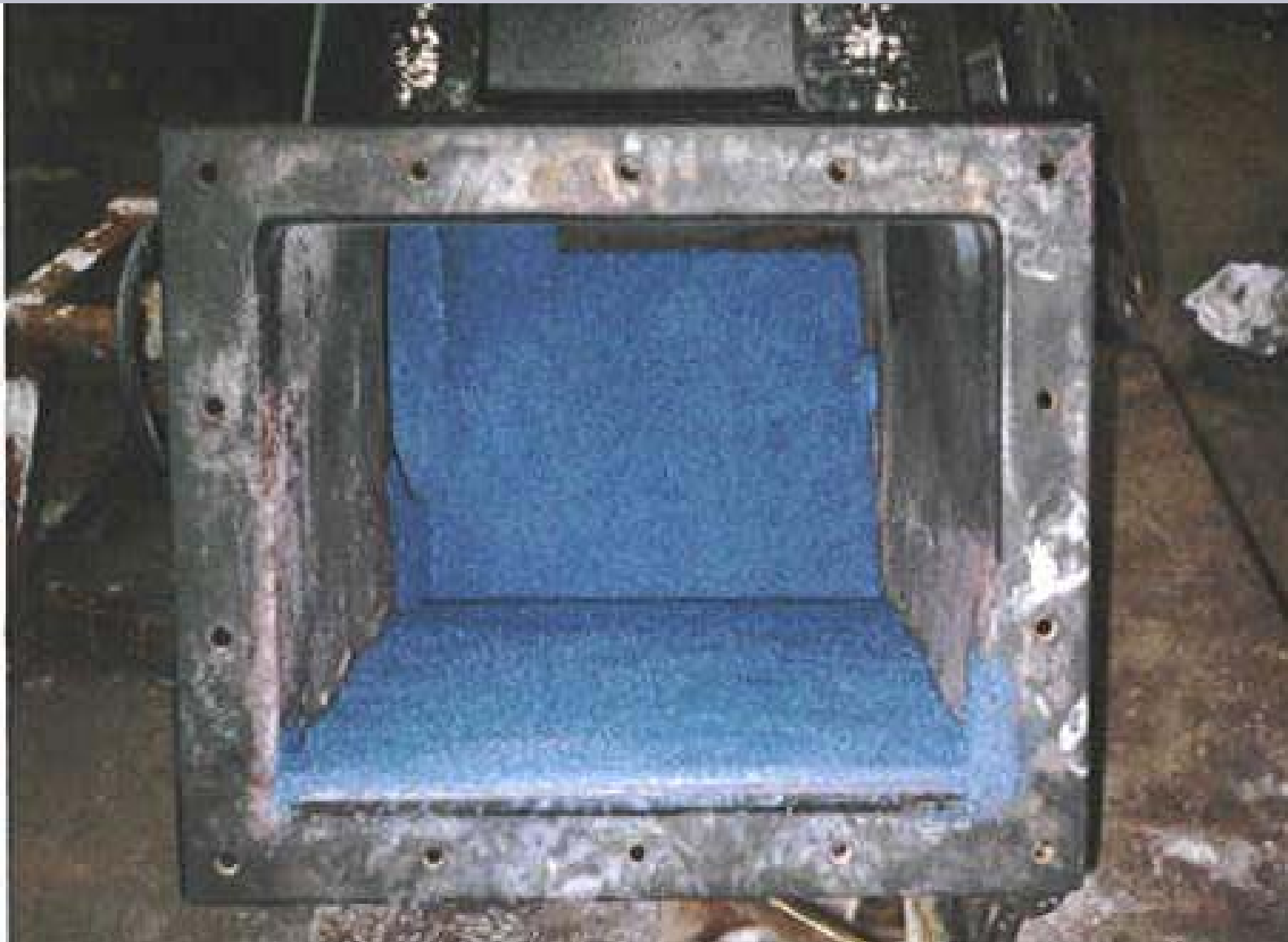




Coal fired power plant FGD wet scrubber absorber mixers protected with ARC MX1 on blade tips.

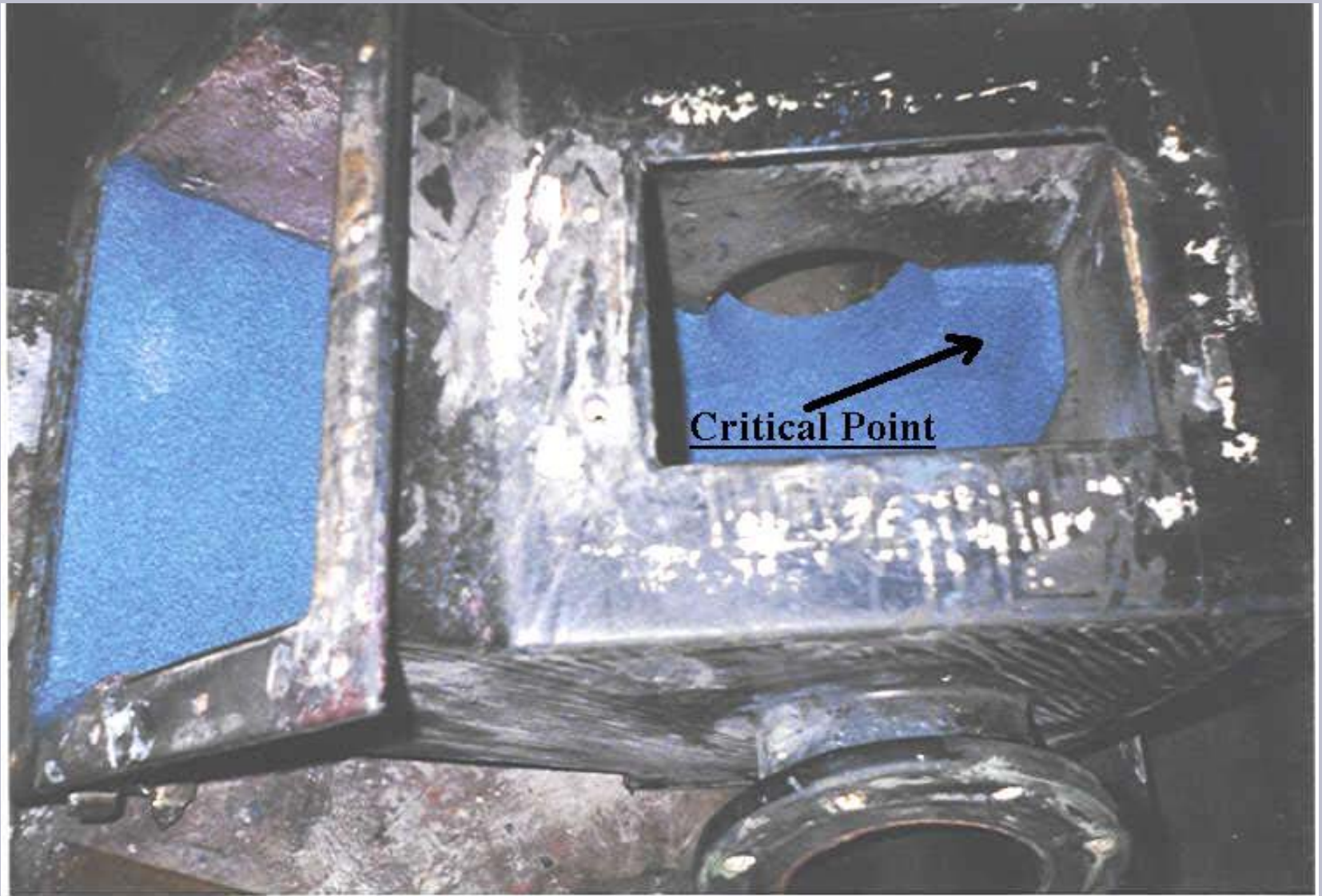
**ARC**

Chesterton® DOC. NO. AC4374E, 10/02



FGD unit ball mill limestone chute with new ARC MX1 lining applied to high wear areas.

**ARC**  
AC4374E



Top view of ARC MX1 liner in limestone chute illustrating high wear area.

**ARC**  
AC4374E



New chutes being lined with ARC MX1.

**ARC**  
AC4374E



Close up view of ARC MX1 lining in new chute.

**ARC**  
AC4374E