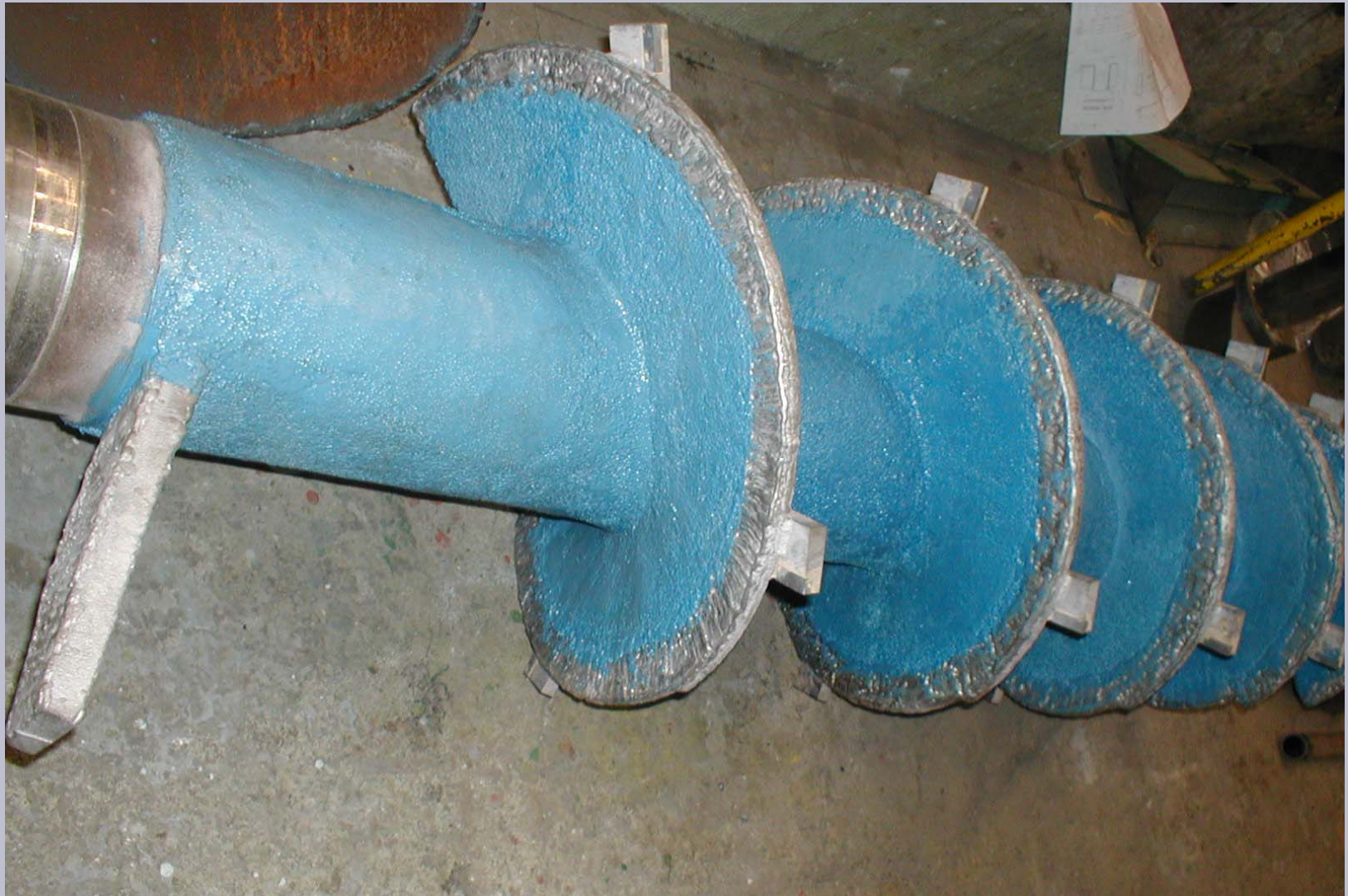




Original stainless steel screw in bark conveyor experienced severe wear. Replacement screw fabricated from Hardox hardened alloy components also exhibited unacceptable wear.

ARC

Chesterton® DOC. NO. AC4373E, 08/02



ARC MX1 was applied to flyght faces and shaft at 6 mm (1/4 inch) thickness. Flyght tips were reinforced with hardened alloy weld overlay.

ARC
AC4373E



**Conveyer screw in operation after two month of service.
Negligible loss in thickness as only the blue matrix has
worn from the surface exposing the white ceramic beads.**

ARC
AC4373E